

CIDEON – engineering digitized.

SAP® Engineering Control Center interface to EPLAN

Cross-Departmental Communications Made Easy

This is where SAP SE makes life easier for customers. It enables data from mechanical engineering, electronics, software development and simulation to be consistently managed within each discipline's own PLM system and within an efficient working environment – SAP Engineering Control Center (SAP ECTR).

With SAP ECTR, all possibilities for digital transformation, the Digital Twin and IoT are open. This is because the crucial design and product data is available in real time – in every phase of the product development process.

Your advantage: Accelerated and closed process workflows enable you to develop competitive standardized products, shorten innovation cycles and achieve higher product quality.



Highlights

- Centrally operable integration platform
- Ideal interface for EPLAN users, with a familiar look and feel
- One user interface even when simultaneously using multiple CAD systems
- No relevant knowledge or extensive training necessary
- Easy handling of SAP including for new users
- Quick and easy access to centralized information, data and objects

CIDEON develops the SAP Engineering Control Center interface to EPLAN exclusively for SAP SE.



PROCESS CONSULTING

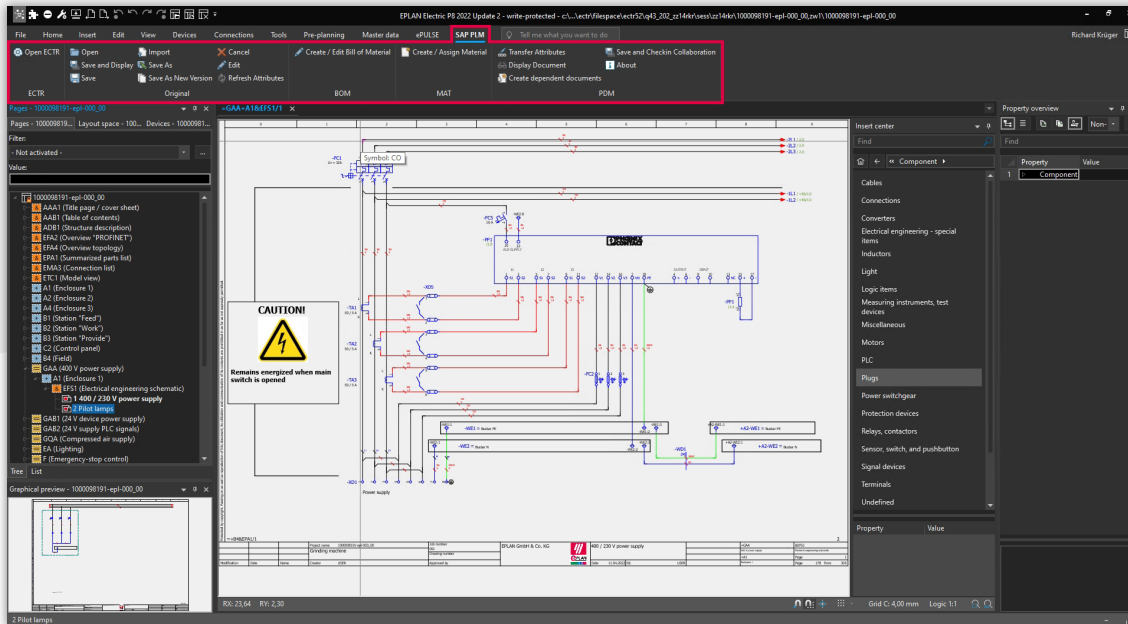
ENGINEERING SOFTWARE

IMPLEMENTATION

GLOBAL SUPPORT

FRIEDHELM LOH GROUP

EPLAN Product Data – Perfectly Integrated



The integrated SAP ECTR ribbon menu in EPLAN

Compatible With SAP PLM and SAP Applications

SAP ECTR has been developed by engineers for engineers with its interface to EPLAN providing technical product designers with the optimal working environment. EPLAN users can perform their tasks in familiar work environments and load related original files for editing or viewing directly from SAP into EPLAN Electric P8 via the integrated SAP ECTR ribbon menu.

Integration between EPLAN and SAP ECTR enables you to seamlessly manage projects, including their dependent documents, as structures in SAP PLM.

Easy assignment of SAP materials to EPLAN projects and parts and the automatic derivation of multi-level SAP Bill of Materials (BOM) guarantee uniform data structures for all personnel involved in development.

All authorized users have access to the original files that are stored in a central, secure repository (“Single Source of Truth”). This enables them to monitor ongoing progress in development and make changes themselves using the SAP Engineering Change Management service.

Automated sharing of bidirectional meta data avoids unnecessary manual multiple data entries to give engineers more time for value-creation tasks.



Consultancy you can Trust

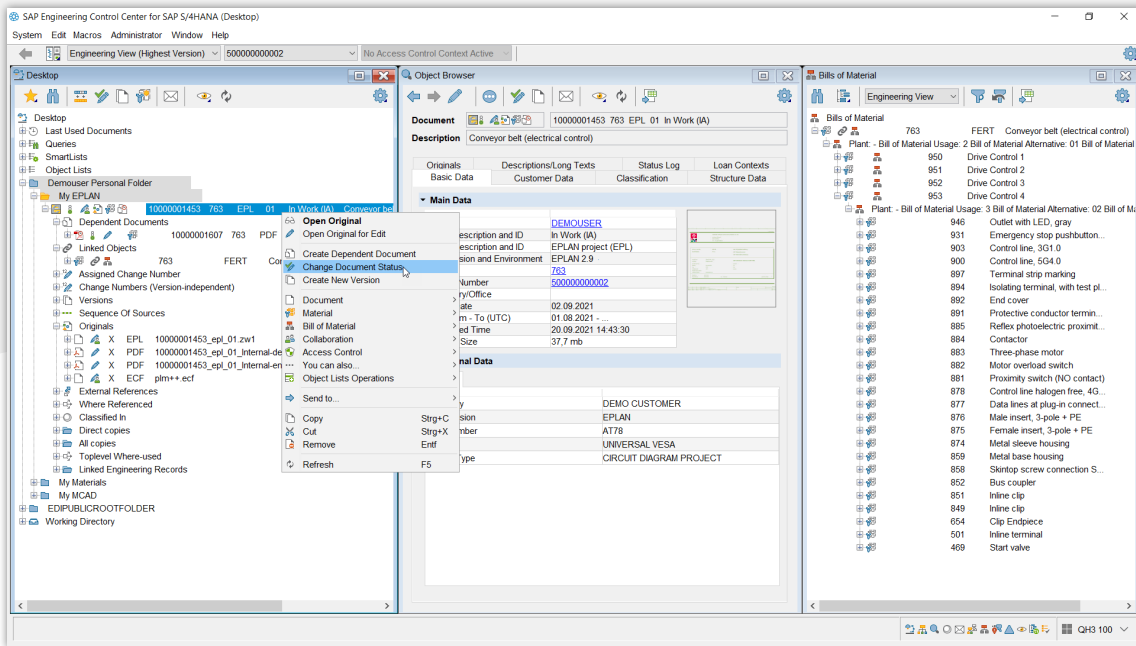
In addition to the comprehensive software expertise in CAD and engineering environments, CIDEON offers an extensive portfolio of consultancy and best-practice services to achieve best success in your SAP PLM projects:

- Implementing the SAP ECTR interfaces
- Support in switching from SAP CAD Desktop to SAP ECTR
- Support with SAP EHP release upgrades or when switching to SAP S/4HANA
- Other SAP PLM products and Add-Ons



SAP® Engineering Control Center interface to EPLAN

SAP Engineering Control Center



The SAP ECTR user interface

Simplify Engineering Work

The SAP ECTR interface looks like the Windows® Explorer for easy processing of any CAD and Office sources. Simple, intuitive data navigation provides a detailed overview of all required information such as documents, materials, BOMs and other SAP objects. Users can set and position the windows as they wish and view data in personal folders. Context-sensitive, customizable selection menus and meaningful color icons (e.g. on release status) provide an overview of the tasks to be completed. Copy & paste and drag & drop functions simplify the structured processing of product details. Users also have access to an integrated help system.

Promoting a Collaborative Product Network

SAP ECTR is the ideal enabler for both concurrent and system engineering as well as for mechatronics by offering a holistic view of all product information. Smooth transition between processes is always ensured by up-to-date and consistent product data being available throughout the company. Changes in design and production processes are traceable via the integrated SAP Engineering Change Management, thereby increasing transparency. Product-related processes can be easily linked and optimized throughout. By converting native CAD data into neutral visualization data, all users, including those without CAD software, can access the information by using the integrated SAP 3D Visual Enterprise Viewer. This high-performance solution enables visual communications across all company areas, from engineering and production through to sales and service.

Overview of Features

SAP Document Management System (DMS)

CIDEON supports you in using the SAP DMS by:

- Creation/update of SAP Document Info Records (DIR) for EPLAN projects
- Import of project files to SAP
- Use of templates
- Open, edit, save and display of projects
- Automatic/manual generation of dependent documents, e.g. export PDF as further original or separate DIR
- Support of the EPLAN Multiuser operation
- Export of further formats (DXF, JPG,...)
- Check-in/Check-out of all originals and dependent documents with edit-locking for checked-out SAP DIRs
- Bidirectional exchange of project header properties with SAP DIR meta data and/or attributes of SAP document-classification
- Version project or save as new SAP DIR
- Comprehensive SAP release and change management including digital signature
- Storage of all EPLAN files in the SAP Content Server



CIDEON Add-Ons:

Automation, Optimization, Integration

In addition to engineering standard solutions, CIDEON develops numerous enhancements for implementing special customer requirements in SAP ERP/PLM. CIDEON Add-Ons are easy-to-use tools with extensive functions that enable optimized processes for common work steps in SAP Document, Material, BOM- and Change Management, and they can be easily integrated into SAP ECTR.

Search functions

- Google®-type searching using QuickSearch
- Search by match codes, object links, where-used lists, classification, queries and in folder structures, assemblies, BOMs
- Visual search support
- Search result with preview or as list using Excel®-type filtering in all columns

SAP Material and Bill of Materials Management

- Create and/or assign an SAP material master (MAT) to the SAP DIS of the EPLAN project
- Create and/or assign a SAP MAT to EPLAN parts
- Automatic derivation of simple/structured SAP material bill of materials from EPLAN

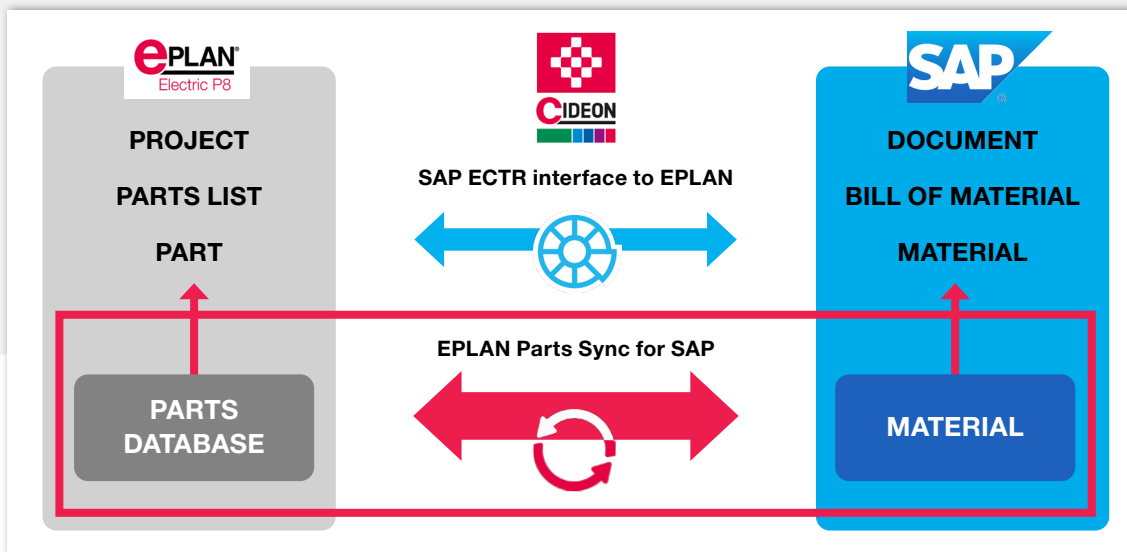
For the automatic synchronization of the parts managed in the EPLAN parts database and the corresponding SAP material masters, we offer the CIDEON EPLAN Synchronizer for SAP as an additional product.

System requirements

- SAP Engineering Control Center 5.2/1.1
- SAP ECC 6.0 EhP 5 and higher or SAP S/4HANA
- EPLAN P8 2.9/2022/2023
- EPIS 2. 2.9/2022/2023
- Windows 10/11 (64 bit)



CIDEON EPLAN Parts Sync for SAP



CIDEON EPLAN Parts Sync for SAP is available as an additional CIDEON product

With the SAP ECTR interface to EPLAN, EPLAN projects are initially managed as documents in SAP as standard. At the same time, SAP material numbers can be created directly for EPLAN parts or existing material masters in SAP can be assigned with a mouse click. The material number is then automatically entered in the EPLAN parts database in the "ERP number" field of the respective part.

A mandatory prerequisite for the transfer of EPLAN part lists to SAP bill of materials (BOM) is the presence of the ERP number, that means an existing SAP material number in the properties of both the structuring elements (e.g. EPLAN groups) as well as all the parts used in the EPLAN project.

The process of creating the SAP materials or assigning them to the individual parts can be easily performed with SAP ECTR interface to EPLAN, but it is a one-time process. Once this process is completed, no further data is exchanged.

But what about changes to EPLAN parts or SAP materials and maintaining data consistency in both systems?

Process automation of parallel databases

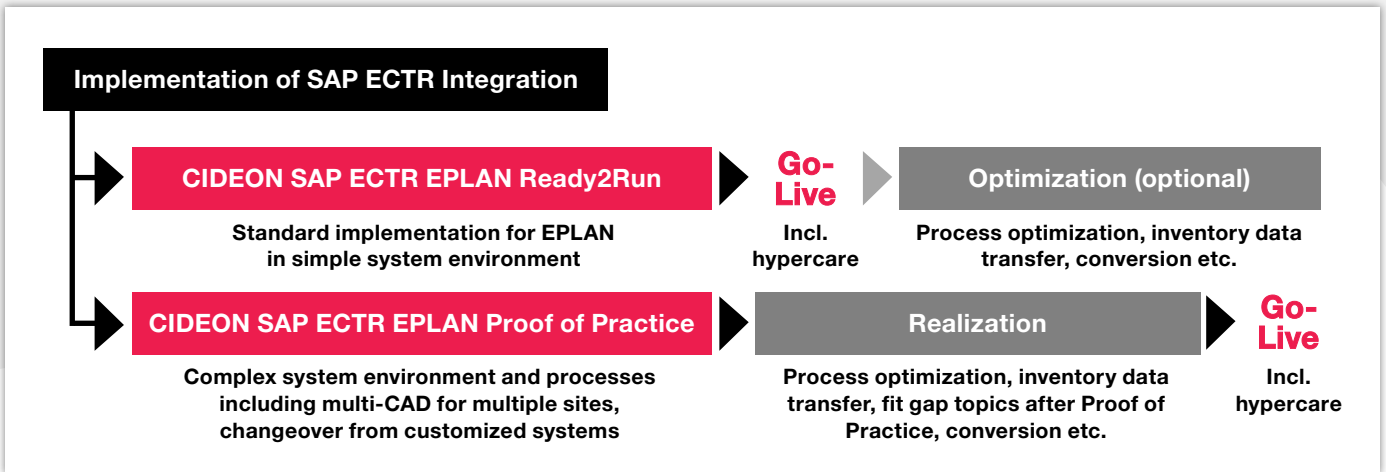
To increase process reliability, it makes sense to establish a permanent, bidirectional comparison between the EPLAN parts database and the SAP materials management system.

This is where CIDEON EPLAN Parts Sync for SAP comes into play. Our product enables to keep the data from the EPLAN parts database synchronized with the assigned SAP materials on the basis of a set of rules that can be adapted to customer-specific requirements. The synchronization takes place in the form of a background process that is started by a definable event. This is either a point in time or a change pointer, i.e. a change to a data master is automatically recognized and executed.



CIDEON EPLAN Parts Sync can be used in addition to SAP ECTR interface to EPLAN or independently of it.

CIDEON Implementation Packages



Get the Benefits of SAP ECTR Quickly and Easily

You want to take advantage of a direct integration between EPLAN and SAP PLM as quickly as possible, but shy away from complex IT projects?

With our two service packages, we make the implementation of the SAP ECTR interface to EPLAN as easy as possible for you, without burdening your valuable time and limited resources with excessive project scopes.

Even if you have a complex system landscape and want to integrate additional CAD systems, you are in good hands with us. With a thorough analysis of your individual requirements, implementation based on best practices, well thought-out training concepts and other attractive services, we create the conditions for fast and successful work with SAP ECTR interfaces.

CIDEON Implementation Packages - Professional and Coordinated Support for Your Project Team

We offer our professional support for the implementation of SAP ECTR interfaces via two standardized service packages.

CIDEON SAP ECTR EPLAN Ready2Run

- Deployment of the SAP ECTR integration in the live environment:
 - Standard configuration in SAP
 - Standard installation & configuration of SAP ECTR
- Key user training
- Support during the test phase
- Implementation of "small" system optimizations
- Initial inventory data review
- Go-Live support including hypercare

CIDEON SAP ECTR EPLAN Proof of Practice

- Installation of a test environment:
 - Standard configuration in SAP
 - Standard installation & configuration of SAP ECTR
- Key user training
- Support during the test phase
- Implementation of import workshops (high level)
- Fit Gap analysis
- Budget estimation for implementation project incl. description
- Realization phase incl. process optimization, inventory data transfer, Fit Gap topics according to proof of practice and conversion
- Go-Live support including hypercare

CIDEON Software & Services GmbH & Co. KG

Lochhamer Schlag 11 · D-82166 Gräfelfing
Tel. +49 (0) 89 909003-0 · Fax +49 (0) 89 909003-250
info@cideon.com · www.cideon.com